



Scoping Scans

VULNERABILITY MANAGEMENT

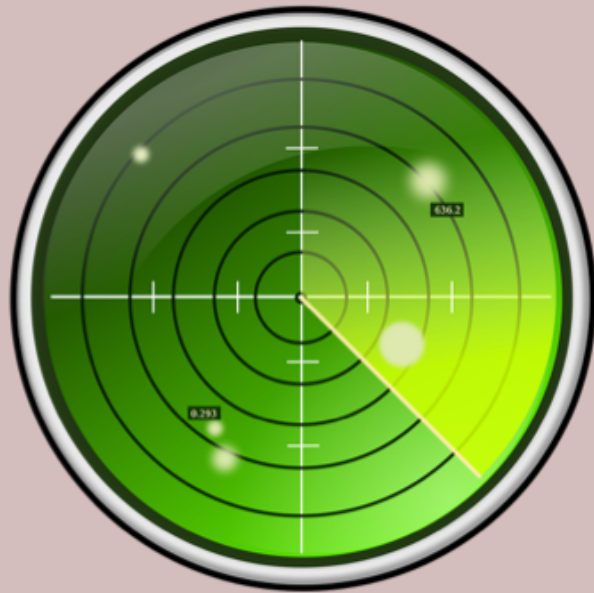
Scope

- Describes the extent of the scan
- What networks and systems are included?
- How will you test if a systems is on the network?
- What tests will be performed against the systems during a scan?



The Importance of Scope

- Develop scope properly and gain agreement from staff and management
- Ensures you are unlikely to cause issues during your scanning efforts



Minimizing the Scope

- Network segmentation often allows you to minimize your scope for compliance scans
- PCI DSS networks should be segmented from the rest of the organizational network

